

# QAQC assay batch report

Report generated on 24-Sep-2025

## Batch Information

Laboratory: ALS\_BRI - Despatch #: EDGI\_29\_P2 - Labjob #: BU25257605 - Return date: 16-Sep-2025

## Standards Statistics

Standard	Assay Field	# of Analyses above Threshold	# of Analyses below Threshold	# of Analyses outside Warning	# of Analyses outside Error
AMIS0020	Sn_ME_XRF15b_pct	6	0	0	0
AMIS0448	Au_Au_ICP21_ppm	3	0	0	0
BEG-24	Au_Au_ICP21_ppm	2	0	0	0
EMOG-17	As_ME_MS61r_ppm	3	0	0	0
EMOG-17	Cu_ME_MS61r_ppm	3	0	0	0
EMOG-17	Nb_ME_MS61r_ppm	3	0	0	0
EMOG-17	Sc_ME_MS61r_ppm	3	0	0	0
EMOG-17	Ti_ME_MS61r_pct	3	0	0	0
GBM321-8	As_ME_MS61r_ppm	1	0	0	0
GBM321-8	Cu_ME_MS61r_ppm	1	0	0	0
GBM321-8	Nb_ME_MS61r_ppm	1	0	0	0
GBM321-8	Sc_ME_MS61r_ppm	1	0	0	0
GBM321-8	Ti_ME_MS61r_pct	1	0	0	0
GPP-14	Au_Au_ICP21_ppm	1	0	0	0
ISA-24	Au_Au_ICP21_ppm	3	0	0	0
MRCA-21	As_ME_MS61r_ppm	1	0	0	0
MRCA-21	Cu_ME_MS61r_ppm	1	0	0	0
MRCA-21	Nb_ME_MS61r_ppm	1	0	0	0
MRCA-21	Sc_ME_MS61r_ppm	1	0	0	0
MRCA-21	Ti_ME_MS61r_pct	1	0	0	0
NCSDC35012	Sn_ME_XRF15b_pct	6	0	0	0
OREAS 243	As_ME_MS61r_ppm	3	0	0	0
OREAS 243	Cu_ME_MS61r_ppm	3	0	0	0
OREAS 243	Nb_ME_MS61r_ppm	3	0	0	0
OREAS 243	Sc_ME_MS61r_ppm	3	0	0	0
OREAS 243	Ti_ME_MS61r_pct	3	0	0	0
STD.OR-230	As_ME_MS61r_ppm	2	0	0	0
STD.OR-230	Au_Au_ICP21_ppm	2	0	0	0
STD.OR-230	Cu_ME_MS61r_ppm	2	0	0	0
STD.OR-230	Nb_ME_MS61r_ppm	2	0	0	0
STD.OR-230	Sc_ME_MS61r_ppm	2	0	0	0
STD.OR-230	Ti_ME_MS61r_pct	2	0	0	0
STD.OR-235b	As_ME_MS61r_ppm	3	0	0	0
STD.OR-235b	Au_Au_ICP21_ppm	3	0	0	0
STD.OR-235b	Cu_ME_MS61r_ppm	3	0	0	0
STD.OR-235b	Nb_ME_MS61r_ppm	3	0	0	0
STD.OR-235b	Sc_ME_MS61r_ppm	3	0	0	0
STD.OR-235b	Ti_ME_MS61r_pct	3	0	0	0
STD.REN05	Sn_ME_XRF15b_pct	1	0	0	0
STD.REN06	Sn_ME_XRF15b_pct	2	0	0	0
STD.REN08	Sn_ME_XRF15b_pct	2	0	0	0

## Blanks Statistics

Standard	Assay Field	# of Analyses above Threshold	# of Analyses below Threshold	# of Analyses outside Warning	# of Analyses outside Error
REN_Blank	As_ME_MS61r_ppm	9	0	0	0
REN_Blank	Au_Au_ICP21_ppm	9	0	0	0
REN_Blank	Cu_ME_MS61r_ppm	9	0	0	0
REN_Blank	Nb_ME_MS61r_ppm	9	0	0	0
REN_Blank	Sc_ME_MS61r_ppm	9	0	0	0
REN_Blank	Sn_ME_XRF15b_pct	9	0	0	0
REN_Blank	Ti_ME_MS61r_pct	9	0	0	0

## Duplicates/Repeats Statistics

CheckStage	Assay Field	# of Analyses above Threshold	# of Analyses below Threshold	# of Analyses outside Warning	# of Analyses outside Error
I : Instrument/Measurement Stage	As_ME_MS61r_ppm	5	0	2	0
I : Instrument/Measurement Stage	Au_Au_ICP21_ppm	1	6	0	0
I : Instrument/Measurement Stage	Cu_ME_MS61r_ppm	5	0	0	0
I : Instrument/Measurement Stage	Nb_ME_MS61r_ppm	5	0	0	0
I : Instrument/Measurement Stage	Sc_ME_MS61r_ppm	5	0	1	0
I : Instrument/Measurement Stage	Sn_ME_XRF15b_pct	1	6	1	0
I : Instrument/Measurement Stage	Ti_ME_MS61r_pct	5	0	0	0

## Standards Analyses

StandardID	Assay Name	Sample ID	Duplicate Number	Assay Value	Expected Value	% Diff	QAQC Status	Import Status
AMIS0020	Sn_ME_XRF15b_pct	St02:AMIS0020_25257605	LAB_STD	0.652				Pending
AMIS0020	Sn_ME_XRF15b_pct	St04:AMIS0020_25257605	LAB_STD	0.651				Pending
AMIS0020	Sn_ME_XRF15b_pct	St05:AMIS0020_25257605	LAB_STD	0.647				Pending
AMIS0020	Sn_ME_XRF15b_pct	St06:AMIS0020_25257605	LAB_STD	0.643				Pending
AMIS0020	Sn_ME_XRF15b_pct	St09:AMIS0020_25257605	LAB_STD	0.659				Pending
AMIS0020	Sn_ME_XRF15b_pct	St19:AMIS0020_25257605	LAB_STD	0.65				Pending
AMIS0448	Au_Au_ICP21_ppm	St26:AMIS0448_25257605	LAB_STD	1.345				Pending
AMIS0448	Au_Au_ICP21_ppm	St28:AMIS0448_25257605	LAB_STD	1.315				Pending
AMIS0448	Au_Au_ICP21_ppm	St29:AMIS0448_25257605	LAB_STD	1.305				Pending
BEG-24	Au_Au_ICP21_ppm	St03:BEG-24_25257605	LAB_STD	2.52				Pending
BEG-24	Au_Au_ICP21_ppm	St16:BEG-24_25257605	LAB_STD	2.52				Pending
EMOG-17	As_ME_MS61r_ppm	St18:EMOG-17_25257605	LAB_STD	586				Pending
EMOG-17	As_ME_MS61r_ppm	St20:EMOG-17_25257605	LAB_STD	582				Pending
EMOG-17	As_ME_MS61r_ppm	St23:EMOG-17_25257605	LAB_STD	555				Pending
EMOG-17	Cu_ME_MS61r_ppm	St18:EMOG-17_25257605	LAB_STD	8320				Pending
EMOG-17	Cu_ME_MS61r_ppm	St20:EMOG-17_25257605	LAB_STD	8340				Pending
EMOG-17	Cu_ME_MS61r_ppm	St23:EMOG-17_25257605	LAB_STD	8220				Pending
EMOG-17	Nb_ME_MS61r_ppm	St18:EMOG-17_25257605	LAB_STD	14.1				Pending
EMOG-17	Nb_ME_MS61r_ppm	St20:EMOG-17_25257605	LAB_STD	14.3				Pending
EMOG-17	Nb_ME_MS61r_ppm	St23:EMOG-17_25257605	LAB_STD	14.9				Pending
EMOG-17	Sc_ME_MS61r_ppm	St18:EMOG-17_25257605	LAB_STD	7.8				Pending
EMOG-17	Sc_ME_MS61r_ppm	St20:EMOG-17_25257605	LAB_STD	7.5				Pending
EMOG-17	Sc_ME_MS61r_ppm	St23:EMOG-17_25257605	LAB_STD	8				Pending
EMOG-17	Ti_ME_MS61r_pct	St18:EMOG-17_25257605	LAB_STD	0.319				Pending
EMOG-17	Ti_ME_MS61r_pct	St20:EMOG-17_25257605	LAB_STD	0.313				Pending
EMOG-17	Ti_ME_MS61r_pct	St23:EMOG-17_25257605	LAB_STD	0.309				Pending
GBM321-8	As_ME_MS61r_ppm	St21:GBM321-8_25257605	LAB_STD	55.4				Pending
GBM321-8	Cu_ME_MS61r_ppm	St21:GBM321-8_25257605	LAB_STD	3690				Pending
GBM321-8	Nb_ME_MS61r_ppm	St21:GBM321-8_25257605	LAB_STD	10.8				Pending
GBM321-8	Sc_ME_MS61r_ppm	St21:GBM321-8_25257605	LAB_STD	18.4				Pending
GBM321-8	Ti_ME_MS61r_pct	St21:GBM321-8_25257605	LAB_STD	0.651				Pending
GPP-14	Au_Au_ICP21_ppm	St27:GPP-14_25257605	LAB_STD	0.922				Pending
ISA-24	Au_Au_ICP21_ppm	St13:ISA-24_25257605	LAB_STD	0.309				Pending
ISA-24	Au_Au_ICP21_ppm	St15:ISA-24_25257605	LAB_STD	0.311				Pending
ISA-24	Au_Au_ICP21_ppm	St22:ISA-24_25257605	LAB_STD	0.318				Pending
MRCA-21	As_ME_MS61r_ppm	St11:MRCA-21_25257605	LAB_STD	19.2				Pending
MRCA-21	Cu_ME_MS61r_ppm	St11:MRCA-21_25257605	LAB_STD	963				Pending
MRCA-21	Nb_ME_MS61r_ppm	St11:MRCA-21_25257605	LAB_STD	15				Pending
MRCA-21	Sc_ME_MS61r_ppm	St11:MRCA-21_25257605	LAB_STD	9.1				Pending
MRCA-21	Ti_ME_MS61r_pct	St11:MRCA-21_25257605	LAB_STD	0.364				Pending
NCSDC35012	Sn_ME_XRF15b_pct	St08:NCSDC35012_25257605	LAB_STD	4.03				Pending
NCSDC35012	Sn_ME_XRF15b_pct	St10:NCSDC35012_25257605	LAB_STD	4.01				Pending
NCSDC35012	Sn_ME_XRF15b_pct	St12:NCSDC35012_25257605	LAB_STD	3.99				Pending
NCSDC35012	Sn_ME_XRF15b_pct	St17:NCSDC35012_25257605	LAB_STD	4.03				Pending
NCSDC35012	Sn_ME_XRF15b_pct	St24:NCSDC35012_25257605	LAB_STD	3.94				Pending
NCSDC35012	Sn_ME_XRF15b_pct	St25:NCSDC35012_25257605	LAB_STD	3.98				Pending
OREAS 243	As_ME_MS61r_ppm	St01:OREAS 243_25257605	LAB_STD	88.1				Pending
OREAS 243	As_ME_MS61r_ppm	St07:OREAS 243_25257605	LAB_STD	82.3				Pending
OREAS 243	As_ME_MS61r_ppm	St14:OREAS 243_25257605	LAB_STD	87.8				Pending
OREAS 243	Cu_ME_MS61r_ppm	St01:OREAS 243_25257605	LAB_STD	181				Pending
OREAS 243	Cu_ME_MS61r_ppm	St07:OREAS 243_25257605	LAB_STD	167				Pending
OREAS 243	Cu_ME_MS61r_ppm	St14:OREAS 243_25257605	LAB_STD	182				Pending
OREAS 243	Nb_ME_MS61r_ppm	St01:OREAS 243_25257605	LAB_STD	3.8				Pending
OREAS 243	Nb_ME_MS61r_ppm	St07:OREAS 243_25257605	LAB_STD	3.5				Pending
OREAS 243	Nb_ME_MS61r_ppm	St14:OREAS 243_25257605	LAB_STD	3.9				Pending
OREAS 243	Sc_ME_MS61r_ppm	St01:OREAS 243_25257605	LAB_STD	36.4				Pending
OREAS 243	Sc_ME_MS61r_ppm	St07:OREAS 243_25257605	LAB_STD	36.1				Pending
OREAS 243	Sc_ME_MS61r_ppm	St14:OREAS 243_25257605	LAB_STD	37.3				Pending
OREAS 243	Ti_ME_MS61r_pct	St01:OREAS 243_25257605	LAB_STD	0.609				Pending
OREAS 243	Ti_ME_MS61r_pct	St07:OREAS 243_25257605	LAB_STD	0.58				Pending
OREAS 243	Ti_ME_MS61r_pct	St14:OREAS 243_25257605	LAB_STD	0.604				Pending
STD.OR-230	As_ME_MS61r_ppm	RDD308603	STD	16.8	17.3	-2.89%		Pending
STD.OR-230	As_ME_MS61r_ppm	RDD308628	STD	17	17.3	-1.73%		Pending
STD.OR-230	Au_Au_ICP21_ppm	RDD308603	STD	0.327	0.337	-2.97%		Pending
STD.OR-230	Au_Au_ICP21_ppm	RDD308628	STD	0.327	0.337	-2.97%		Pending
STD.OR-230	Cu_ME_MS61r_ppm	RDD308603	STD	168.5	169	-0.30%		Pending
STD.OR-230	Cu_ME_MS61r_ppm	RDD308628	STD	177.5	169	5.03%		Pending
STD.OR-230	Nb_ME_MS61r_ppm	RDD308603	STD	3.3	3.39	-2.65%		Pending
STD.OR-230	Nb_ME_MS61r_ppm	RDD308628	STD	3.4	3.39	0.29%		Pending
STD.OR-230	Sc_ME_MS61r_ppm	RDD308603	STD	42	43.7	-3.89%		Pending
STD.OR-230	Sc_ME_MS61r_ppm	RDD308628	STD	43.2	43.7	-1.14%		Pending
STD.OR-230	Ti_ME_MS61r_pct	RDD308603	STD	0.601	0.639	-5.95%		Pending
STD.OR-230	Ti_ME_MS61r_pct	RDD308628	STD	0.623	0.639	-2.50%		Pending
STD.OR-235b	As_ME_MS61r_ppm	RDD308552	STD	327	353	-7.37%		Pending

## Standards Analyses

StandardID	Assay Name	Sample ID	Duplicate Number	Assay Value	Expected Value	% Diff	QAQC Status	Import Status
STD.OR-235b	As_ME_MS61r_ppm	RDD308578	STD	366	353	3.68%		Pending
STD.OR-235b	As_ME_MS61r_ppm	RDD308654	STD	352	353	-0.28%		Pending
STD.OR-235b	Au_Au_ICP21_ppm	RDD308552	STD	1.62	1.63	-0.61%		Pending
STD.OR-235b	Au_Au_ICP21_ppm	RDD308578	STD	1.67	1.63	2.45%		Pending
STD.OR-235b	Au_Au_ICP21_ppm	RDD308654	STD	1.64	1.63	0.61%		Pending
STD.OR-235b	Cu_ME_MS61r_ppm	RDD308552	STD	31.4	29.3	7.17%		Pending
STD.OR-235b	Cu_ME_MS61r_ppm	RDD308578	STD	29.1	29.3	-0.68%		Pending
STD.OR-235b	Cu_ME_MS61r_ppm	RDD308654	STD	26.5	29.3	-9.56%		Pending
STD.OR-235b	Nb_ME_MS61r_ppm	RDD308552	STD	17.2	15.8	8.86%		Pending
STD.OR-235b	Nb_ME_MS61r_ppm	RDD308578	STD	16.4	15.8	3.80%		Pending
STD.OR-235b	Nb_ME_MS61r_ppm	RDD308654	STD	15	15.8	-5.06%		Pending
STD.OR-235b	Sc_ME_MS61r_ppm	RDD308552	STD	15.6	14.7	6.12%		Pending
STD.OR-235b	Sc_ME_MS61r_ppm	RDD308578	STD	15	14.7	2.04%		Pending
STD.OR-235b	Sc_ME_MS61r_ppm	RDD308654	STD	14.6	14.7	-0.68%		Pending
STD.OR-235b	Ti_ME_MS61r_pct	RDD308552	STD	0.511	0.489	4.50%		Pending
STD.OR-235b	Ti_ME_MS61r_pct	RDD308578	STD	0.483	0.489	-1.23%		Pending
STD.OR-235b	Ti_ME_MS61r_pct	RDD308654	STD	0.486	0.489	-0.61%		Pending
STD.REN05	Sn_ME_XRF15b_pct	RDD308627	STD	2.62	2.68	-2.24%		Pending
STD.REN06	Sn_ME_XRF15b_pct	RDD308577	STD	2.48	2.54	-2.36%		Pending
STD.REN06	Sn_ME_XRF15b_pct	RDD308653	STD	2.54	2.54	0.00%		Pending
STD.REN08	Sn_ME_XRF15b_pct	RDD308551	STD	1.1	1.12	-1.79%		Pending
STD.REN08	Sn_ME_XRF15b_pct	RDD308602	STD	1.11	1.12	-0.89%		Pending

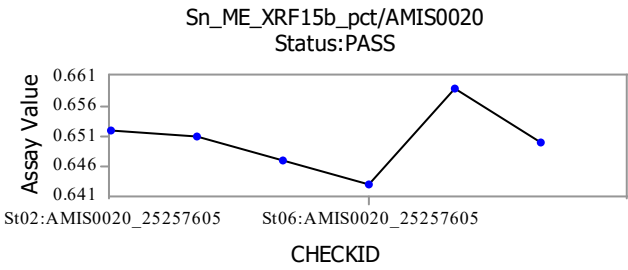
## Blanks Analyses

StandardID	Assay Name	Sample ID	Duplicate Number	Assay Value	Expected Value	% Diff	QAQC Status	Import Status
REN_Blank	As_ME_MS61r_ppm	RDD308545	BLK	1.2				Pending
REN_Blank	As_ME_MS61r_ppm	RDD308557	BLK	1.2				Pending
REN_Blank	As_ME_MS61r_ppm	RDD308565	BLK	1				Pending
REN_Blank	As_ME_MS61r_ppm	RDD308570	BLK	1.2				Pending
REN_Blank	As_ME_MS61r_ppm	RDD308572	BLK	1.4				Pending
REN_Blank	As_ME_MS61r_ppm	RDD308604	BLK	1				Pending
REN_Blank	As_ME_MS61r_ppm	RDD308623	BLK	1.3				Pending
REN_Blank	As_ME_MS61r_ppm	RDD308635	BLK	1.7				Pending
REN_Blank	As_ME_MS61r_ppm	RDD308637	BLK	1.2				Pending
REN_Blank	Au_Au_ICP21_ppm	RDD308545	BLK	0.001				Pending
REN_Blank	Au_Au_ICP21_ppm	RDD308557	BLK	0.001				Pending
REN_Blank	Au_Au_ICP21_ppm	RDD308565	BLK	0.002				Pending
REN_Blank	Au_Au_ICP21_ppm	RDD308570	BLK	0.002				Pending
REN_Blank	Au_Au_ICP21_ppm	RDD308572	BLK	0.002				Pending
REN_Blank	Au_Au_ICP21_ppm	RDD308604	BLK	0.002				Pending
REN_Blank	Au_Au_ICP21_ppm	RDD308623	BLK	0.001				Pending
REN_Blank	Au_Au_ICP21_ppm	RDD308635	BLK	0.002				Pending
REN_Blank	Au_Au_ICP21_ppm	RDD308637	BLK	0.001				Pending
REN_Blank	Cu_ME_MS61r_ppm	RDD308545	BLK	3.2				Pending
REN_Blank	Cu_ME_MS61r_ppm	RDD308557	BLK	2.6				Pending
REN_Blank	Cu_ME_MS61r_ppm	RDD308565	BLK	3.5				Pending
REN_Blank	Cu_ME_MS61r_ppm	RDD308570	BLK	3				Pending
REN_Blank	Cu_ME_MS61r_ppm	RDD308572	BLK	3				Pending
REN_Blank	Cu_ME_MS61r_ppm	RDD308604	BLK	2.3				Pending
REN_Blank	Cu_ME_MS61r_ppm	RDD308623	BLK	2.9				Pending
REN_Blank	Cu_ME_MS61r_ppm	RDD308635	BLK	3.7				Pending
REN_Blank	Cu_ME_MS61r_ppm	RDD308637	BLK	2.8				Pending
REN_Blank	Nb_ME_MS61r_ppm	RDD308545	BLK	1.3				Pending
REN_Blank	Nb_ME_MS61r_ppm	RDD308557	BLK	1.4				Pending
REN_Blank	Nb_ME_MS61r_ppm	RDD308565	BLK	1.3				Pending
REN_Blank	Nb_ME_MS61r_ppm	RDD308570	BLK	1.3				Pending
REN_Blank	Nb_ME_MS61r_ppm	RDD308572	BLK	1.3				Pending
REN_Blank	Nb_ME_MS61r_ppm	RDD308604	BLK	1.1				Pending
REN_Blank	Nb_ME_MS61r_ppm	RDD308623	BLK	1.1				Pending
REN_Blank	Nb_ME_MS61r_ppm	RDD308635	BLK	1.2				Pending
REN_Blank	Nb_ME_MS61r_ppm	RDD308637	BLK	1				Pending
REN_Blank	Sc_ME_MS61r_ppm	RDD308545	BLK	0.2				Pending
REN_Blank	Sc_ME_MS61r_ppm	RDD308557	BLK	0.2				Pending
REN_Blank	Sc_ME_MS61r_ppm	RDD308565	BLK	0.2				Pending
REN_Blank	Sc_ME_MS61r_ppm	RDD308570	BLK	0.2				Pending
REN_Blank	Sc_ME_MS61r_ppm	RDD308572	BLK	0.2				Pending
REN_Blank	Sc_ME_MS61r_ppm	RDD308604	BLK	0.1				Pending
REN_Blank	Sc_ME_MS61r_ppm	RDD308623	BLK	0.2				Pending
REN_Blank	Sc_ME_MS61r_ppm	RDD308635	BLK	0.2				Pending
REN_Blank	Sc_ME_MS61r_ppm	RDD308637	BLK	0.2				Pending
REN_Blank	Sn_ME_XRF15b_pct	RDD308545	BLK	0.0025	0	Error!		Pending
REN_Blank	Sn_ME_XRF15b_pct	RDD308557	BLK	0.0025	0	Error!		Pending
REN_Blank	Sn_ME_XRF15b_pct	RDD308565	BLK	0.0025	0	Error!		Pending
REN_Blank	Sn_ME_XRF15b_pct	RDD308570	BLK	0.0025	0	Error!		Pending
REN_Blank	Sn_ME_XRF15b_pct	RDD308572	BLK	0.0025	0	Error!		Pending
REN_Blank	Sn_ME_XRF15b_pct	RDD308604	BLK	0.0025	0	Error!		Pending
REN_Blank	Sn_ME_XRF15b_pct	RDD308623	BLK	0.0025	0	Error!		Pending
REN_Blank	Sn_ME_XRF15b_pct	RDD308635	BLK	0.0025	0	Error!		Pending
REN_Blank	Sn_ME_XRF15b_pct	RDD308637	BLK	0.0025	0	Error!		Pending
REN_Blank	Ti_ME_MS61r_pct	RDD308545	BLK	0.05				Pending
REN_Blank	Ti_ME_MS61r_pct	RDD308557	BLK	0.054				Pending
REN_Blank	Ti_ME_MS61r_pct	RDD308565	BLK	0.054				Pending
REN_Blank	Ti_ME_MS61r_pct	RDD308570	BLK	0.048				Pending
REN_Blank	Ti_ME_MS61r_pct	RDD308572	BLK	0.051				Pending
REN_Blank	Ti_ME_MS61r_pct	RDD308604	BLK	0.044				Pending
REN_Blank	Ti_ME_MS61r_pct	RDD308623	BLK	0.043				Pending
REN_Blank	Ti_ME_MS61r_pct	RDD308635	BLK	0.046				Pending
REN_Blank	Ti_ME_MS61r_pct	RDD308637	BLK	0.04				Pending

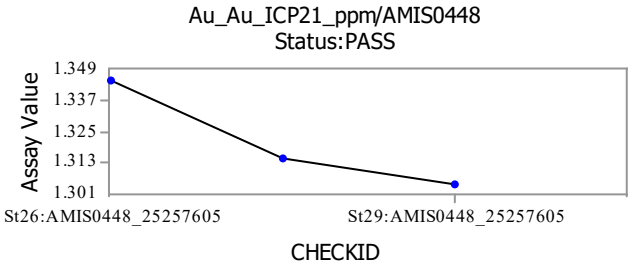
## Duplicates/Repeats Analyses

Check Stage	Assay Name	Sample ID	Assay Value	Check ID	Duplicate Number	Check Value	MAPD	QAQC Status	Import Status
I	As_ME_MS61r_ppm	RDD308548	35.4	Ch:RDD308548	EDGI_29_P2	34.3	3.16%		Pending
I	As_ME_MS61r_ppm	RDD308586	18.1	Ch:RDD308586	EDGI_29_P2	16.9	6.86%	Warning	Pending
I	As_ME_MS61r_ppm	RDD308612	4	Ch:RDD308612	EDGI_29_P2	4			Pending
I	As_ME_MS61r_ppm	RDD308622	81	Ch:RDD308622	EDGI_29_P2	85	4.82%		Pending
I	As_ME_MS61r_ppm	RDD308648	11.8	Ch:RDD308648	EDGI_29_P2	11.2	5.22%	Warning	Pending
I	Au_Au_ICP21_ppm	RDD308540	0.004	Ch:RDD308540	EDGI_29_P2	0.004			Pending
I	Au_Au_ICP21_ppm	RDD308561	0.004	Ch:RDD308561	EDGI_29_P2	0.003			Pending
I	Au_Au_ICP21_ppm	RDD308587	0.003	Ch:RDD308587	EDGI_29_P2	0.003			Pending
I	Au_Au_ICP21_ppm	RDD308608	0.005	Ch:RDD308608	EDGI_29_P2	0.005			Pending
I	Au_Au_ICP21_ppm	RDD308643	0.001	Ch:RDD308643	EDGI_29_P2	0.002			Pending
I	Au_Au_ICP21_ppm	RDD308652	0.003	Ch:RDD308652	EDGI_29_P2	0.002			Pending
I	Au_Au_ICP21_ppm	RDD308663	0.004	Ch:RDD308663	EDGI_29_P2	0.001			Pending
I	Cu_ME_MS61r_ppm	RDD308548	25.6	Ch:RDD308548	EDGI_29_P2	25	2.37%		Pending
I	Cu_ME_MS61r_ppm	RDD308586	70.1	Ch:RDD308586	EDGI_29_P2	68.3	2.60%		Pending
I	Cu_ME_MS61r_ppm	RDD308612	20.1	Ch:RDD308612	EDGI_29_P2	20.2	0.50%		Pending
I	Cu_ME_MS61r_ppm	RDD308622	849	Ch:RDD308622	EDGI_29_P2	860	1.29%		Pending
I	Cu_ME_MS61r_ppm	RDD308648	20.1	Ch:RDD308648	EDGI_29_P2	20	0.50%		Pending
I	Nb_ME_MS61r_ppm	RDD308548	6.3	Ch:RDD308548	EDGI_29_P2	6.2	1.60%		Pending
I	Nb_ME_MS61r_ppm	RDD308586	10.9	Ch:RDD308586	EDGI_29_P2	10.5	3.74%		Pending
I	Nb_ME_MS61r_ppm	RDD308612	9.2	Ch:RDD308612	EDGI_29_P2	9	2.20%		Pending
I	Nb_ME_MS61r_ppm	RDD308622	2.1	Ch:RDD308622	EDGI_29_P2	2.2	4.65%		Pending
I	Nb_ME_MS61r_ppm	RDD308648	19.8	Ch:RDD308648	EDGI_29_P2	20	1.01%		Pending
I	Sc_ME_MS61r_ppm	RDD308548	8.9	Ch:RDD308548	EDGI_29_P2	8.7	2.27%		Pending
I	Sc_ME_MS61r_ppm	RDD308586	14.6	Ch:RDD308586	EDGI_29_P2	14	4.20%		Pending
I	Sc_ME_MS61r_ppm	RDD308612	6.6	Ch:RDD308612	EDGI_29_P2	6.7	1.50%		Pending
I	Sc_ME_MS61r_ppm	RDD308622	2.9	Ch:RDD308622	EDGI_29_P2	3	3.39%		Pending
I	Sc_ME_MS61r_ppm	RDD308648	5.3	Ch:RDD308648	EDGI_29_P2	5	5.83%	Warning	Pending
I	Sn_ME_XRF15b_pct	RDD308548	0.0025	Ch:RDD308548	EDGI_29_P2	0.008			Pending
I	Sn_ME_XRF15b_pct	RDD308569	0.009	Ch:RDD308569	EDGI_29_P2	0.011			Pending
I	Sn_ME_XRF15b_pct	RDD308593	0.009	Ch:RDD308593	EDGI_29_P2	0.011			Pending
I	Sn_ME_XRF15b_pct	RDD308598	0.007	Ch:RDD308598	EDGI_29_P2	0.007			Pending
I	Sn_ME_XRF15b_pct	RDD308614	0.0025	Ch:RDD308614	EDGI_29_P2	0.008			Pending
I	Sn_ME_XRF15b_pct	RDD308638	0.221	Ch:RDD308638	EDGI_29_P2	0.206	7.03%	Warning	Pending
I	Sn_ME_XRF15b_pct	RDD308648	0.0025	Ch:RDD308648	EDGI_29_P2	0.0025			Pending
I	Ti_ME_MS61r_pct	RDD308548	0.176	Ch:RDD308548	EDGI_29_P2	0.178	1.13%		Pending
I	Ti_ME_MS61r_pct	RDD308586	0.359	Ch:RDD308586	EDGI_29_P2	0.355	1.12%		Pending
I	Ti_ME_MS61r_pct	RDD308612	0.256	Ch:RDD308612	EDGI_29_P2	0.253	1.18%		Pending
I	Ti_ME_MS61r_pct	RDD308622	0.063	Ch:RDD308622	EDGI_29_P2	0.064	1.57%		Pending
I	Ti_ME_MS61r_pct	RDD308648	0.184	Ch:RDD308648	EDGI_29_P2	0.184			Pending

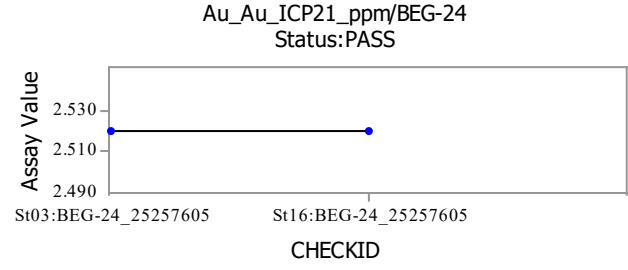
Standard: AMIS0020



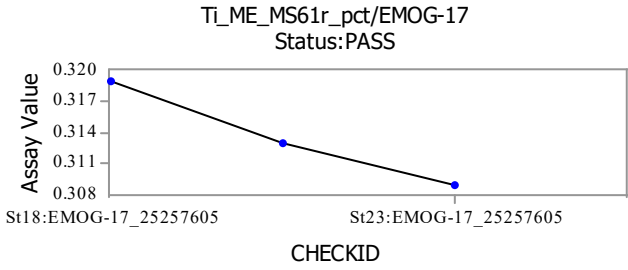
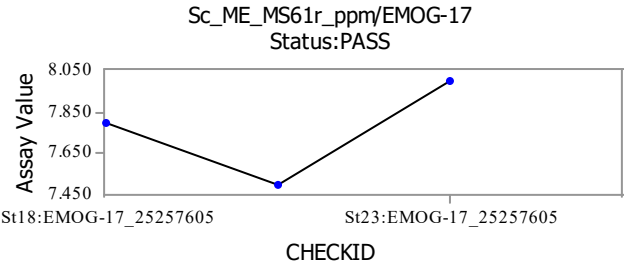
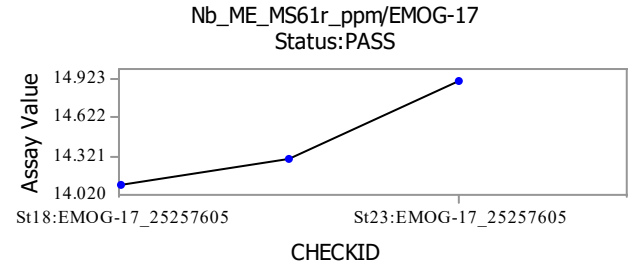
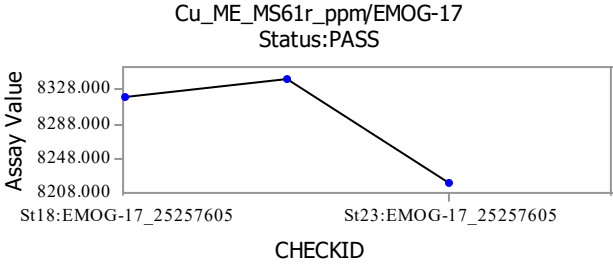
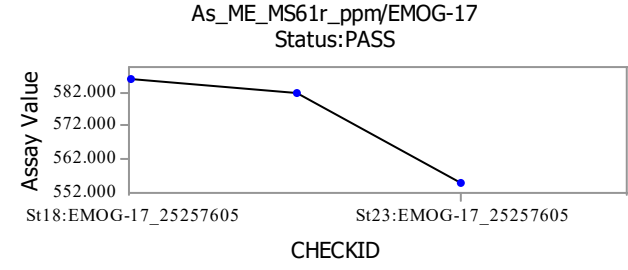
Standard: AMIS0448



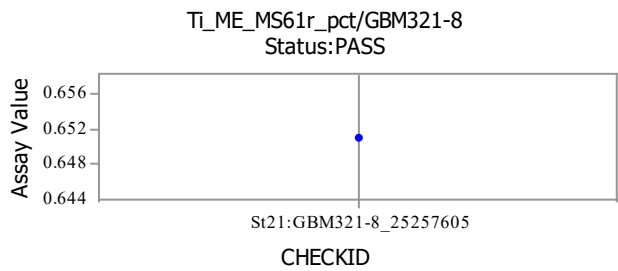
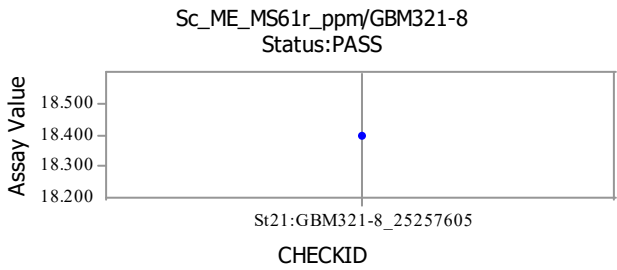
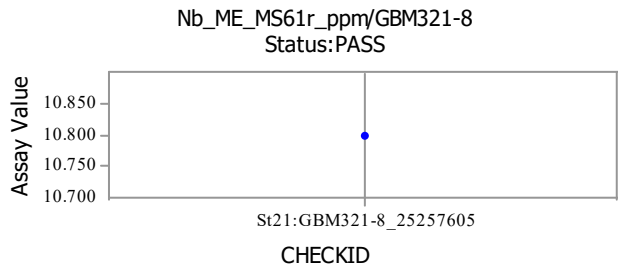
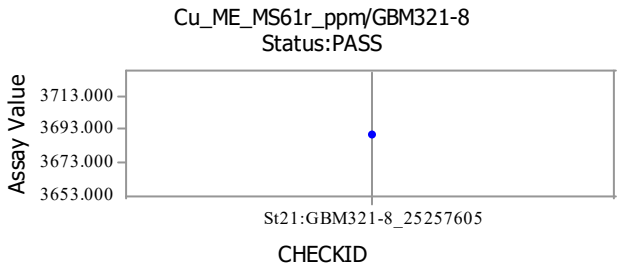
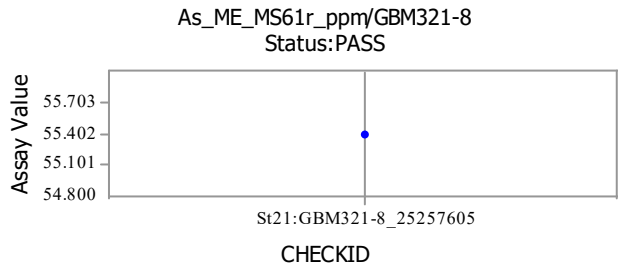
Standard: BEG-24



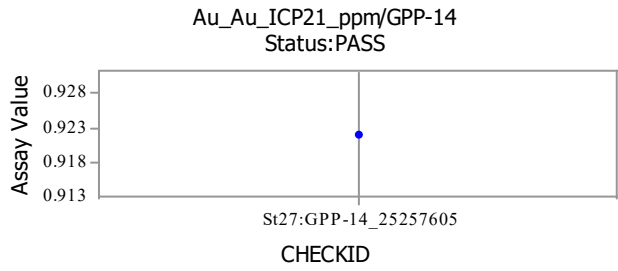
Standard: EMOG-17



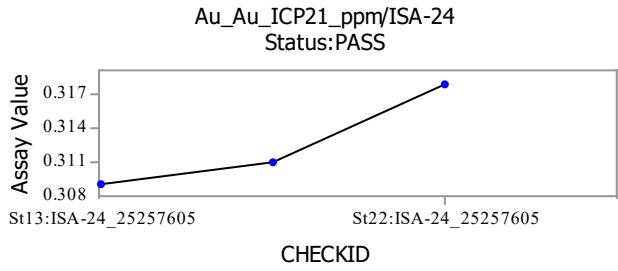
Standard: GBM321-8



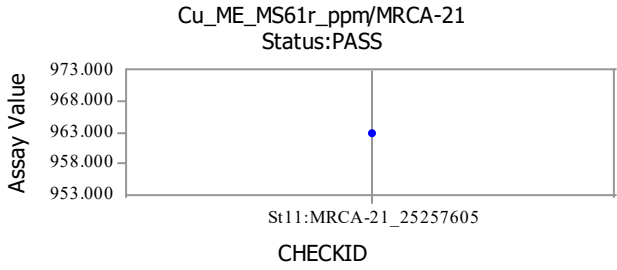
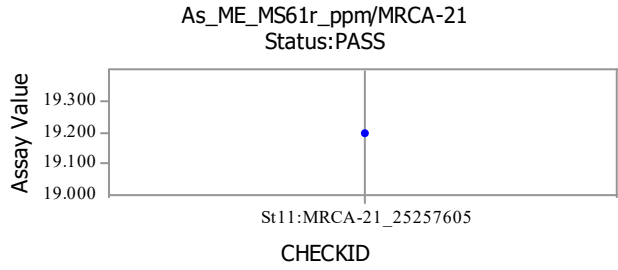
Standard: GPP-14



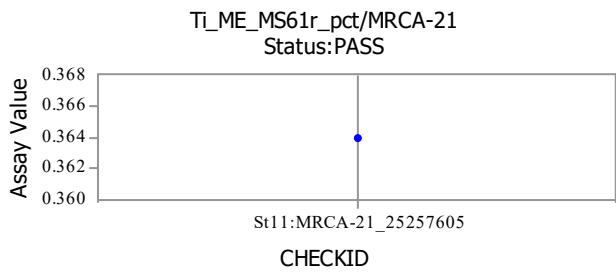
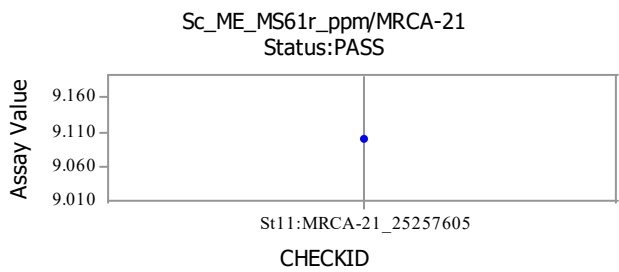
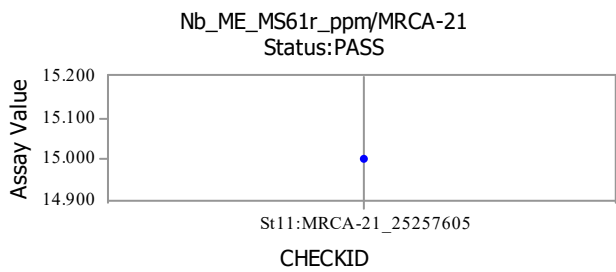
Standard: ISA-24



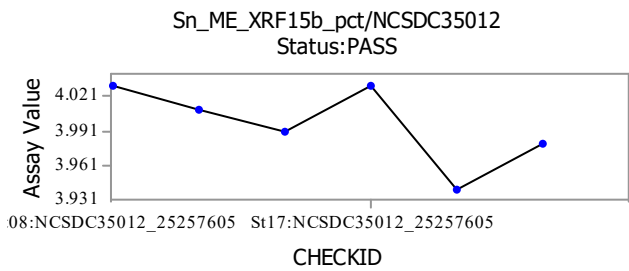
Standard: MRCA-21



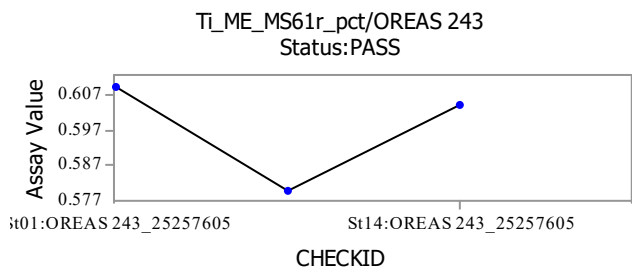
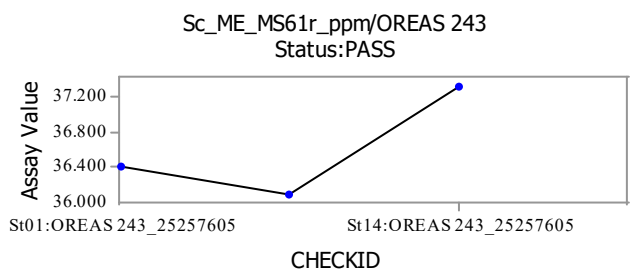
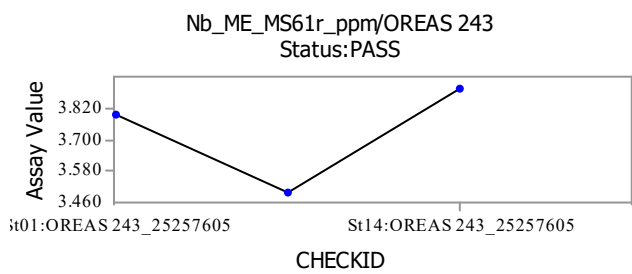
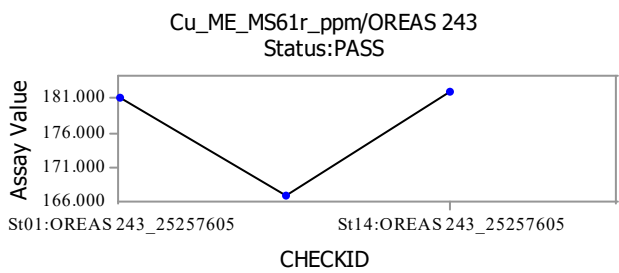
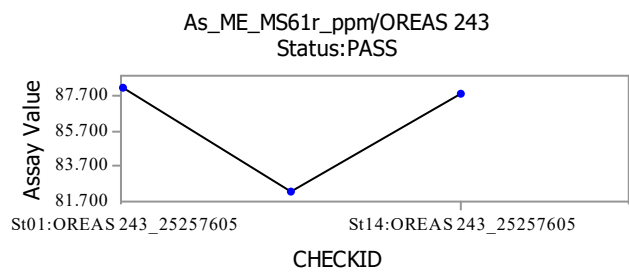




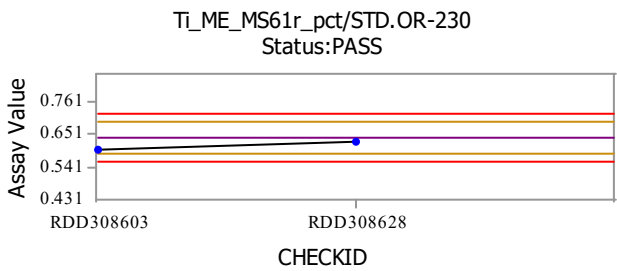
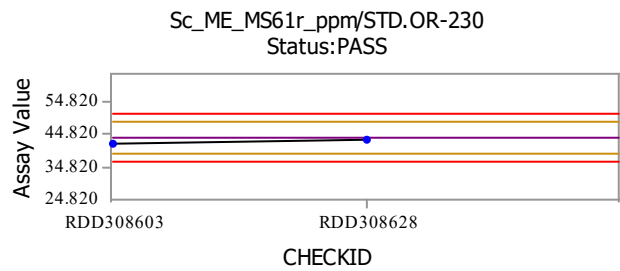
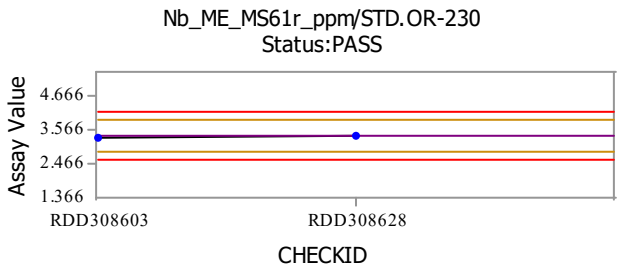
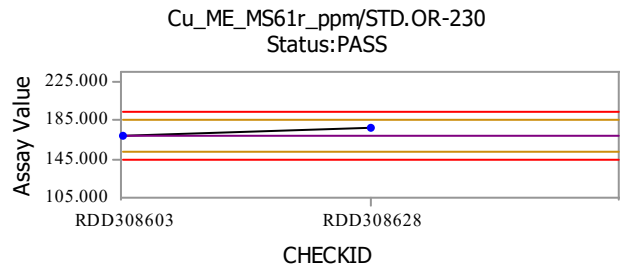
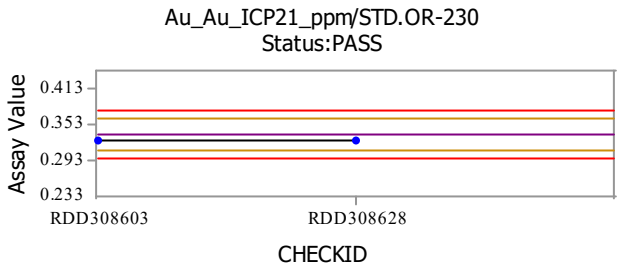
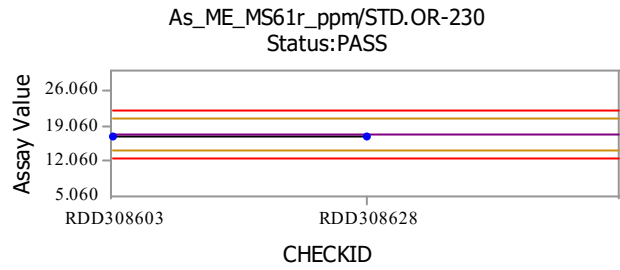
### Standard: NCSDC35012



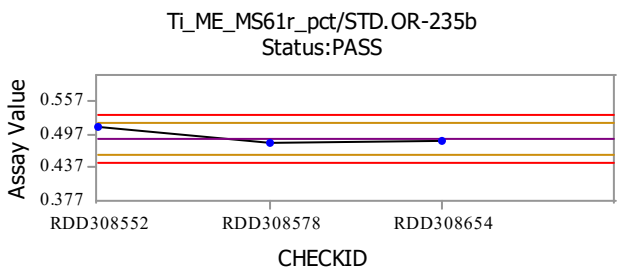
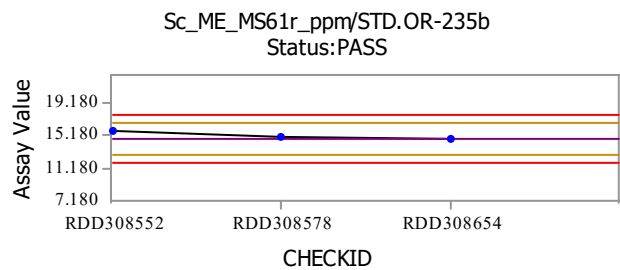
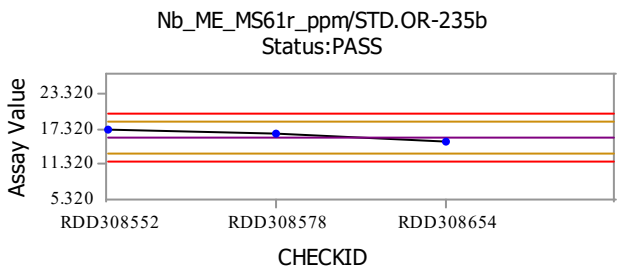
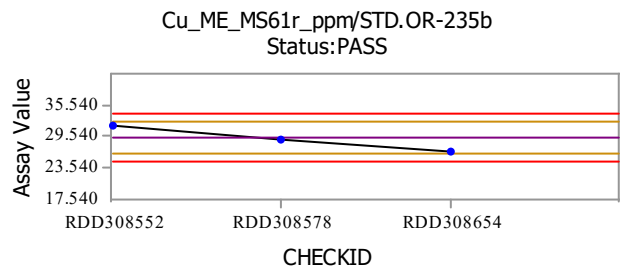
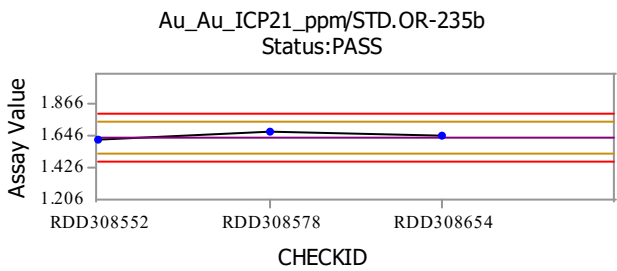
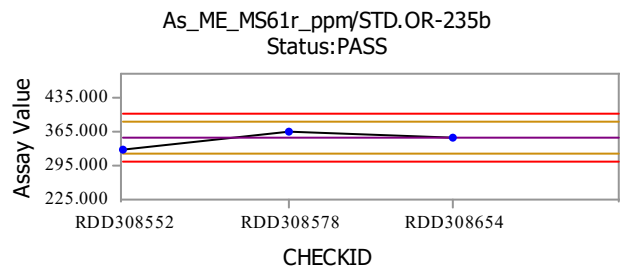
### Standard: OREAS 243



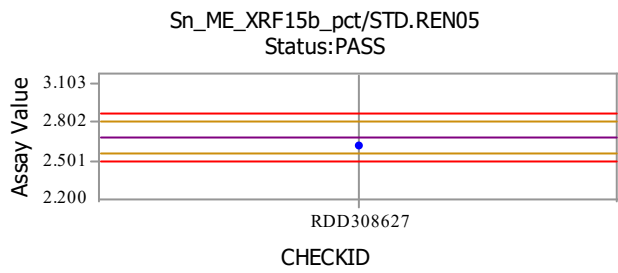
Standard: STD.OR-230



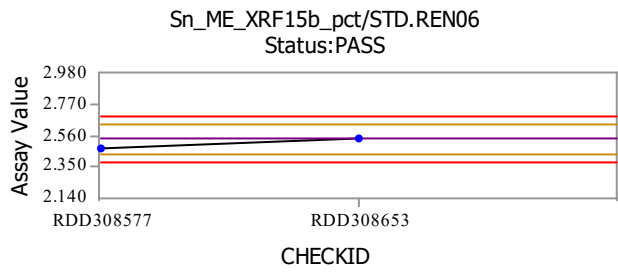
Standard: STD.OR-235b



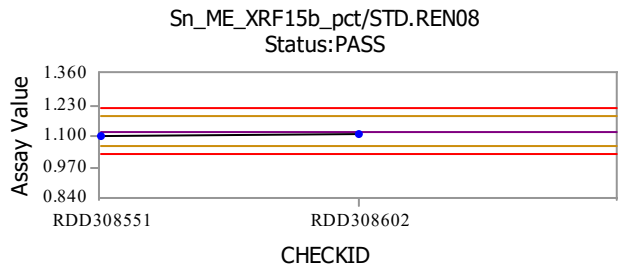
Standard: STD.REN05



Standard: STD.REN06



Standard: STD.REN08

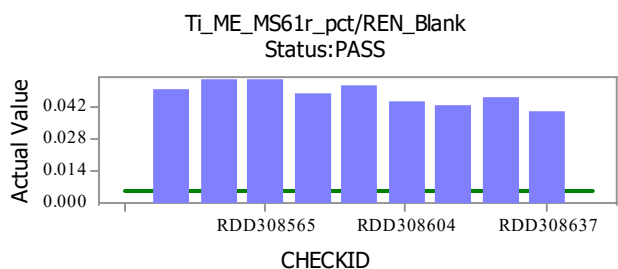
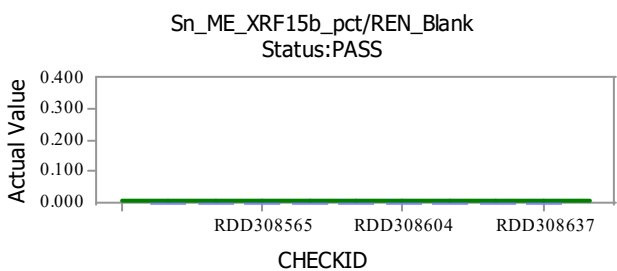
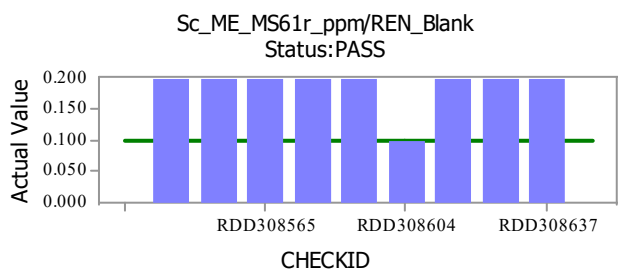
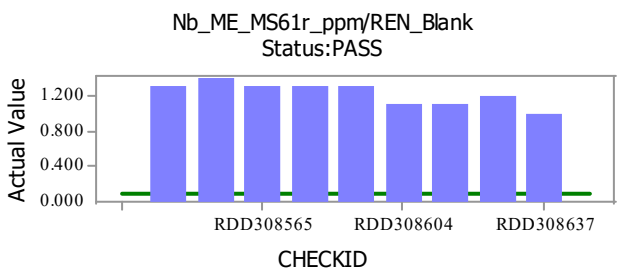
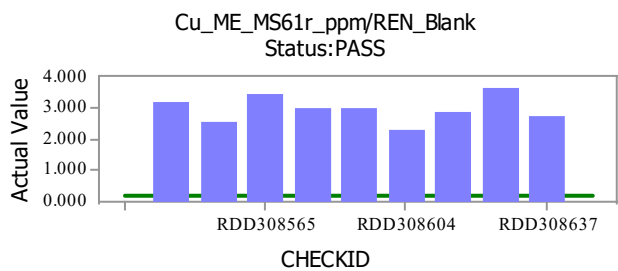
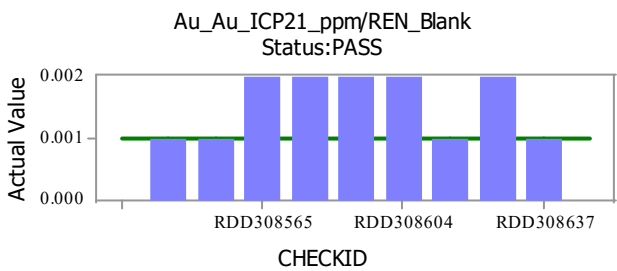
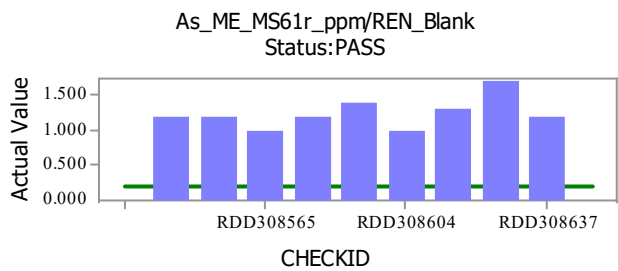


Standards Legend

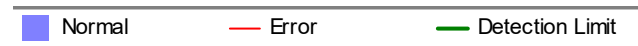
- |                |             |
|----------------|-------------|
| Expected Value | Warning     |
| Error          | + Threshold |
| ▲ Error        | ▼ Warning   |
| ● Normal       |             |

Blank: ALS\_BLANK

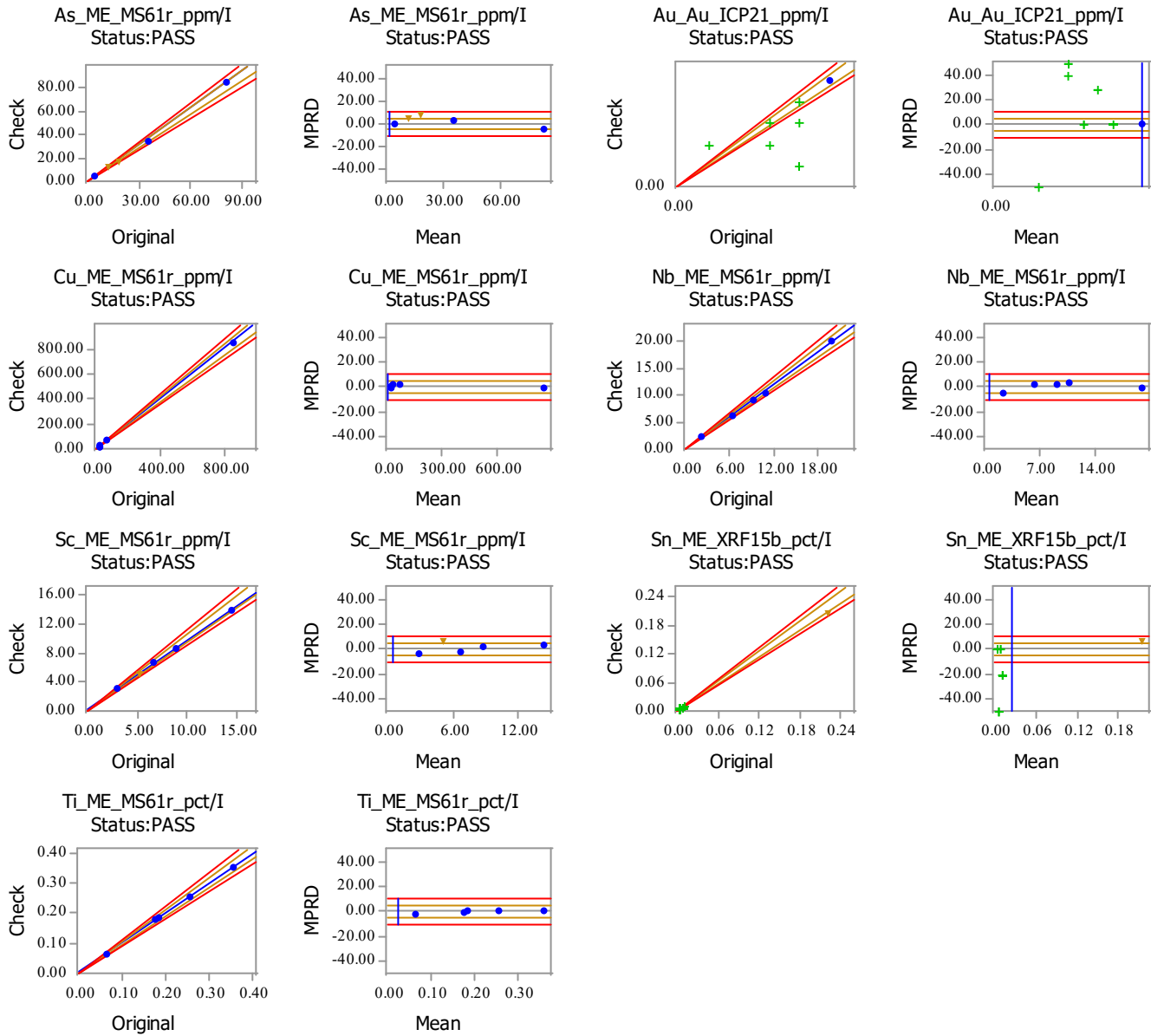
Blank: REN\_Blank



Blanks Legend



CheckStage: I



Duplicates Legend

